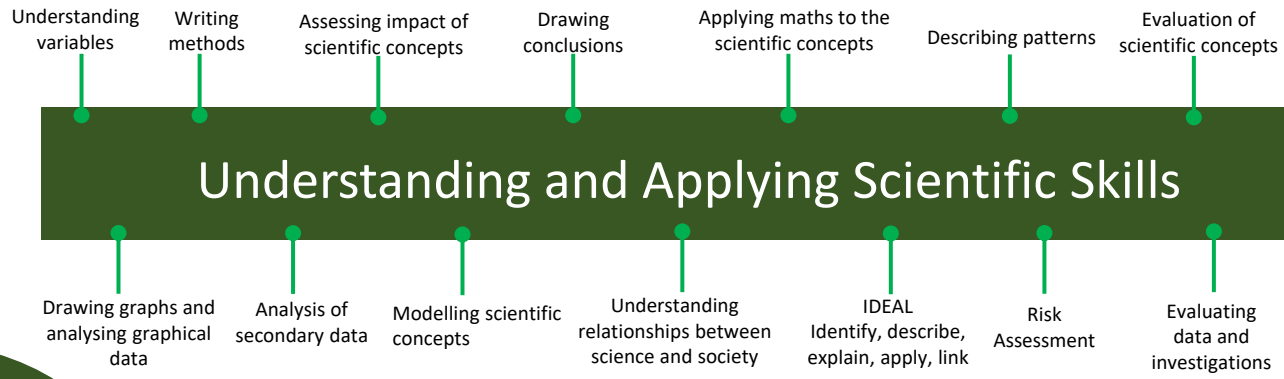


# Biology LEARNING JOURNEY (GCSE combined science)

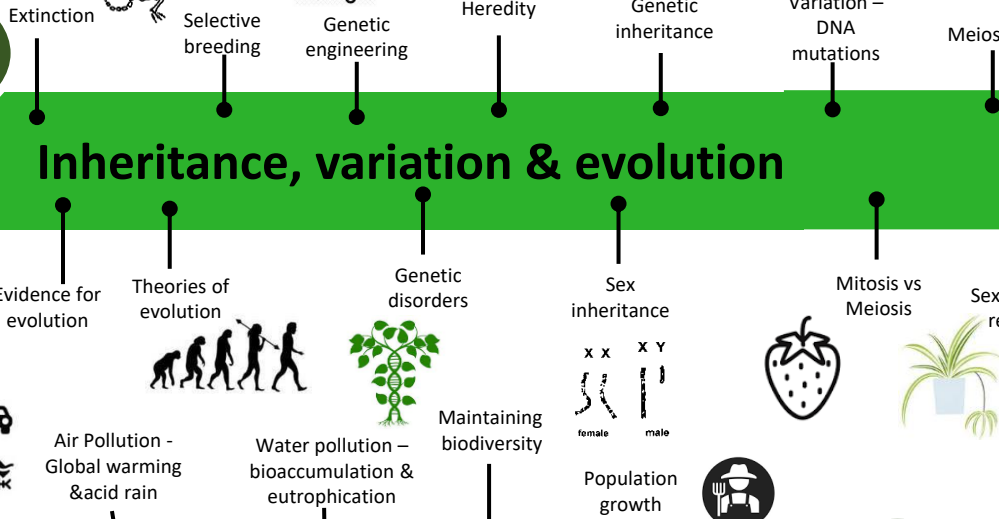


GCSE Biology Examinations

A-Level Biology & Beyond

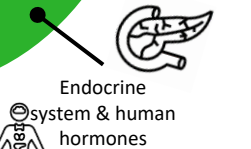
Revision

## Inheritance, variation & evolution



Menstrual cycle

Diabetes



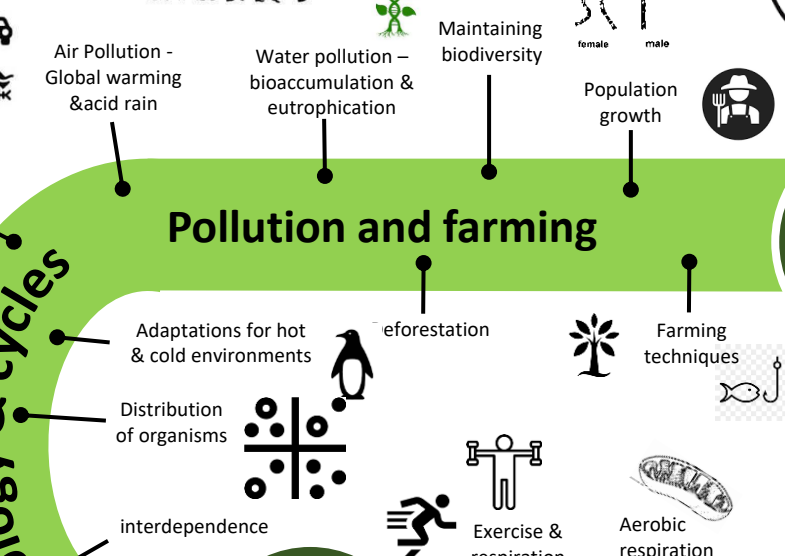
Endocrine system & human hormones

B6

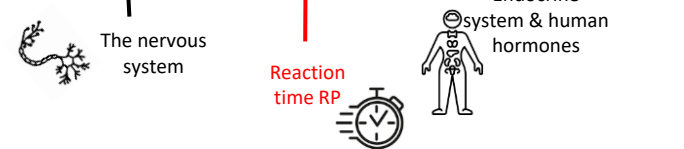
Contraception

Control of blood glucose

## Pollution and farming



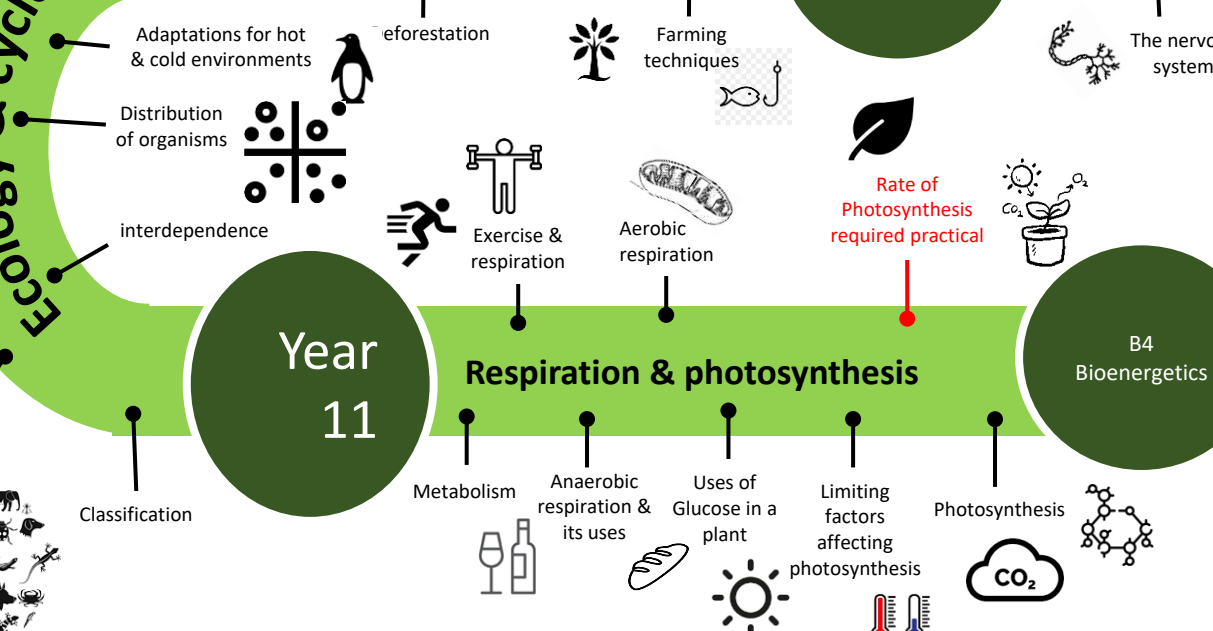
## Nervous control



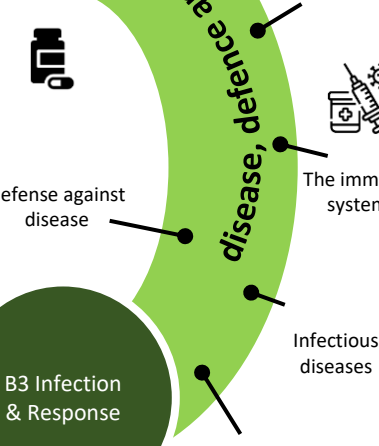
B5 Homeostasis & Response

B4 Bioenergetics

## Respiration & photosynthesis

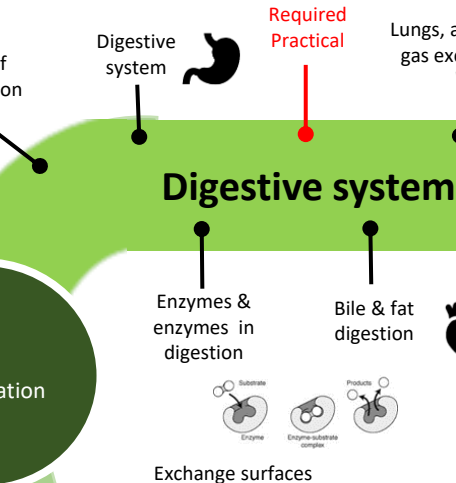


## disease, defence and treatment

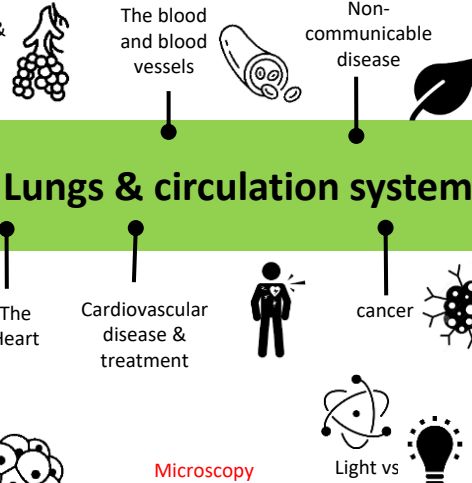


Year 11

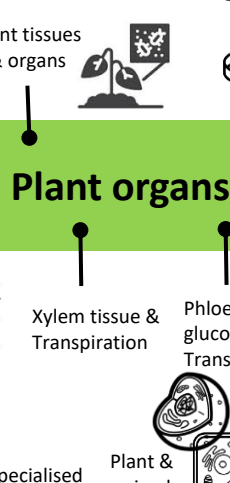
## Digestive system



## Lungs & circulation system



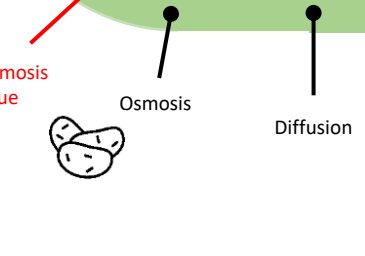
## Plant organs



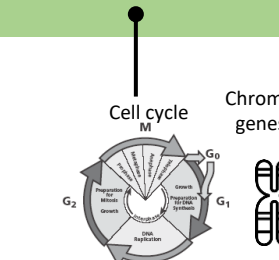
B3 Infection & Response

B2 Organisation

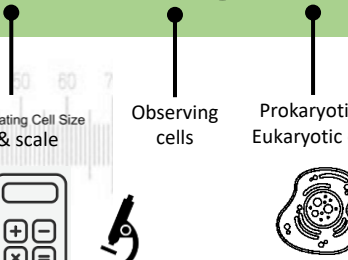
## Cell Transport



## Cell division



## Observing Cells



B1 cell Biology

Year 10

**Combined Science Specification**  
<https://www.aqa.org.uk/subjects/science/gcse/chemistry-8462>

**Biology Topics**

- B1 Cell Biology
- B2 Organisation
- B3 Infection & response
- B4 Bioenergetics
- B5 Homeostasis & response
- B6 Inheritance, variation & evolution
- B7 Ecology
- B8 Key themes and ideas

**Assessments**

**Biology paper B1**

- What's assessed?
- B1 Cell Biology
  - B2 Organisation
  - B3 Infection & response
  - B4 Bioenergetics
  - B8 Key themes and ideas

**Biology paper B2**

- What's assessed?
- B5 Homeostasis & response
  - B6 Inheritance, variation & evolution
  - B7 Ecology
  - B8 Key themes and ideas

**How is it assessed?**

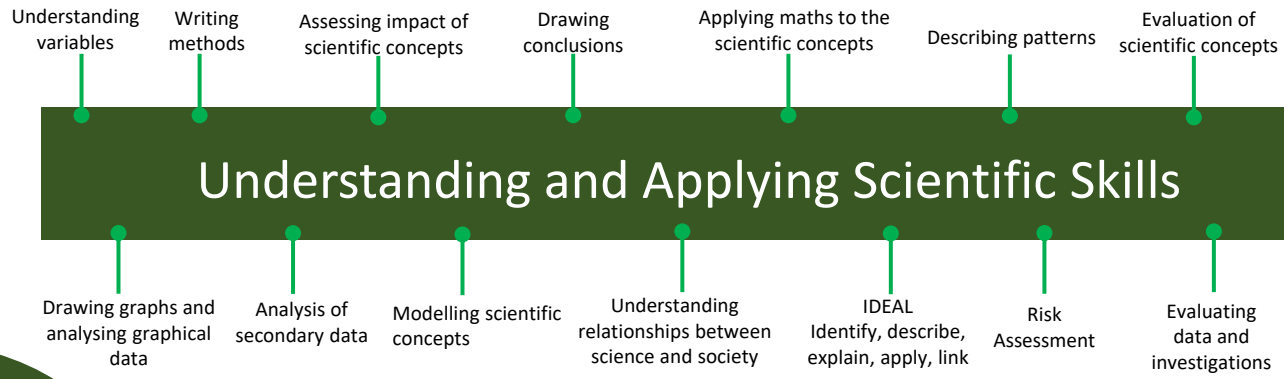
6 x Written exams, 1 hour 15 minutes each (2x Biology, 2x Chemistry, 2x Physics) 2 GCSEs total

Choice of higher or foundation tiers

70 marks per paper

Multiple choice, structured, closed short answer and open response extended answer questions

# Biology LEARNING JOURNEY (GCSE combined science)

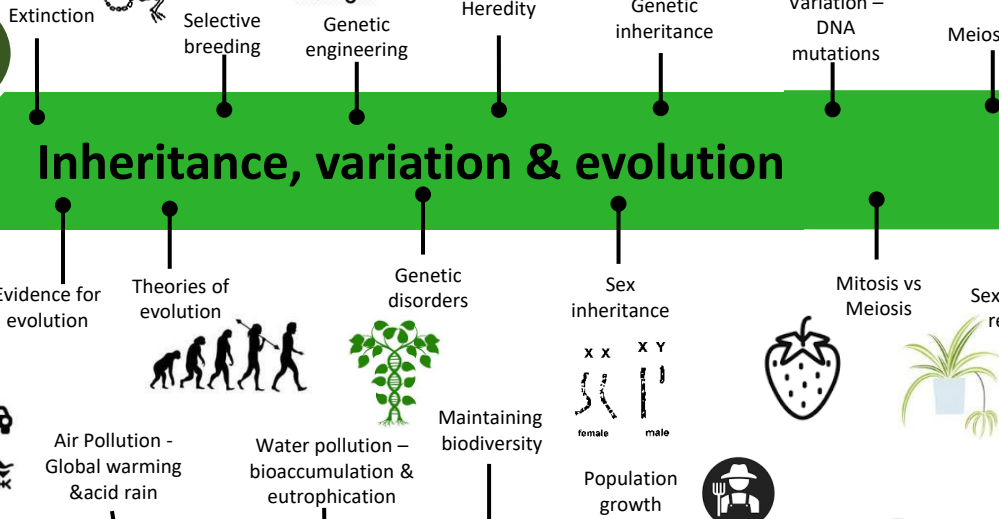


GCSE Biology Examinations

A-Level Biology & Beyond

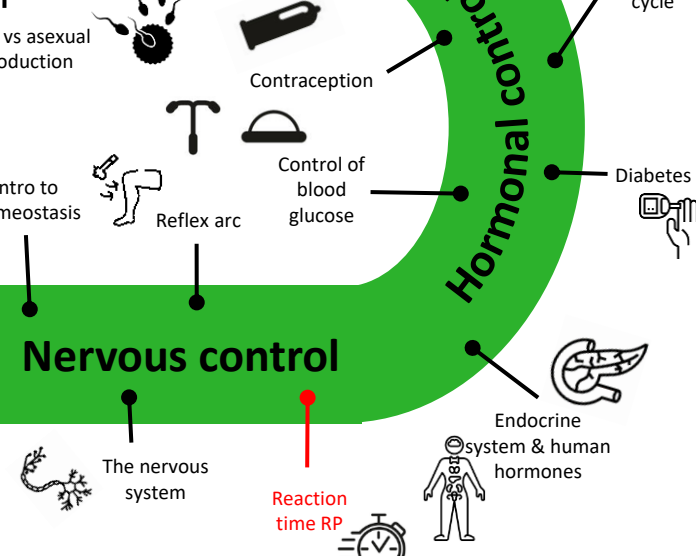
Revision

## Inheritance, variation & evolution

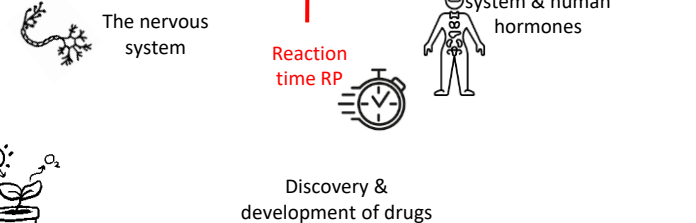


B6

## Hormonal control

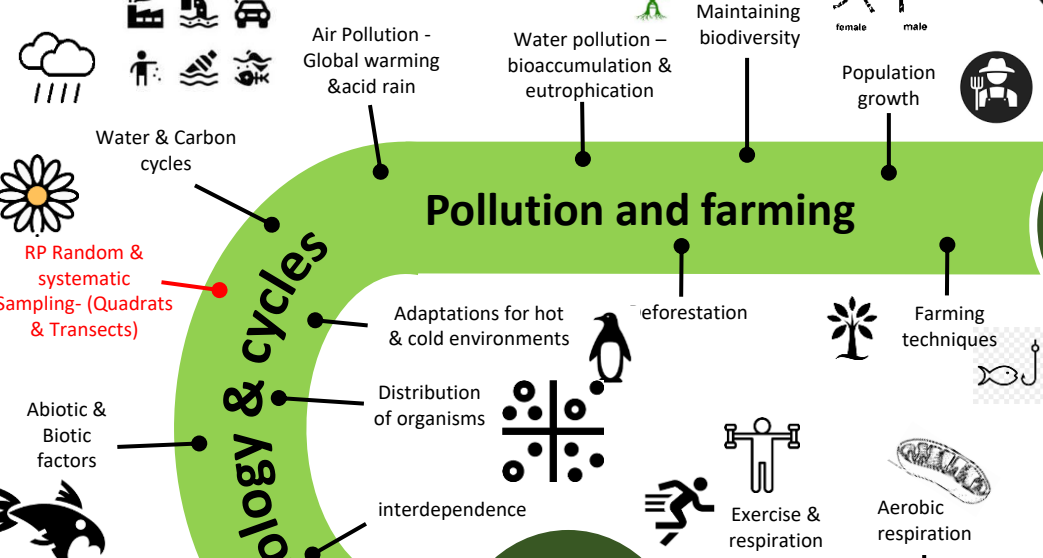


## Nervous control

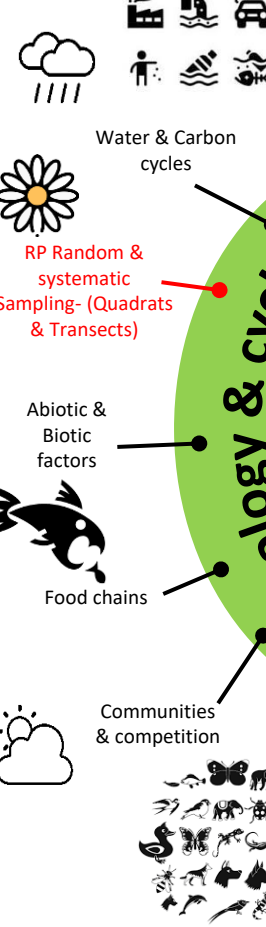


B5 Homeostasis & Response

## Pollution and farming

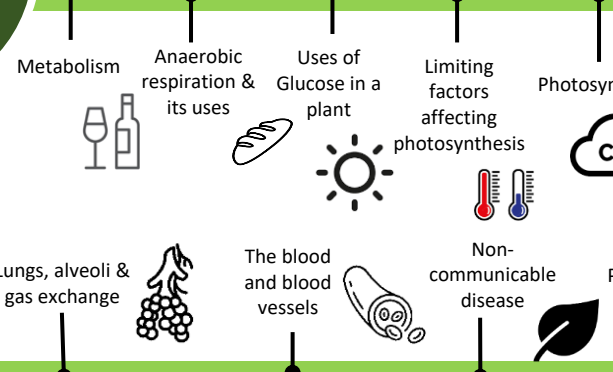


## Ecology & cycles



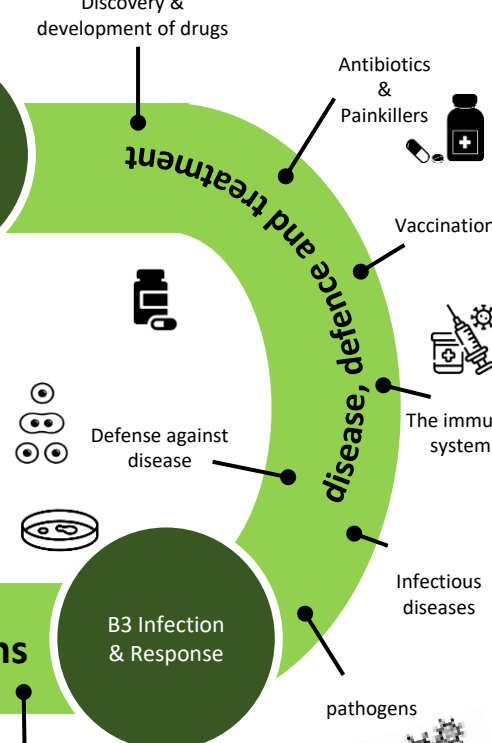
Year 11

## Respiration & photosynthesis



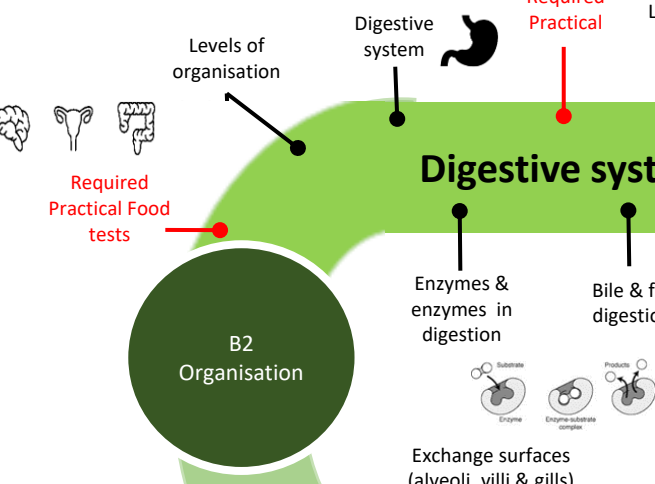
B4 Bioenergetics

## disease, defence and treatment

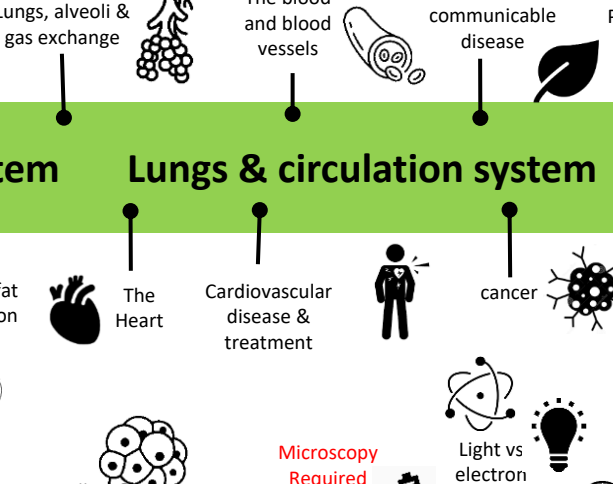


B3 Infection & Response

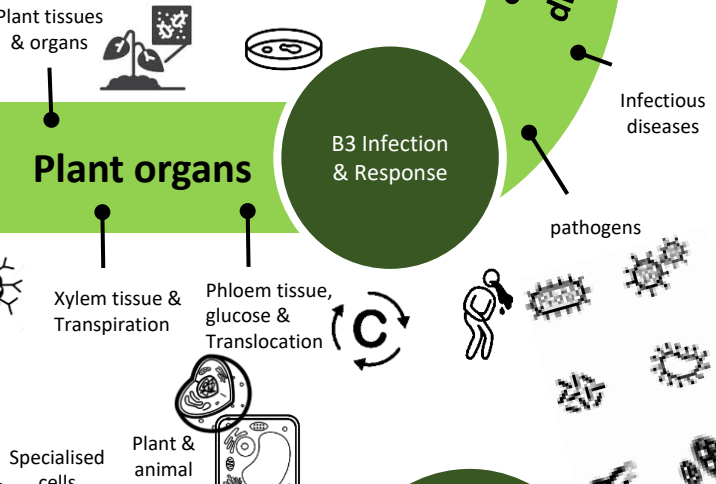
## Digestive system



## Lungs & circulation system

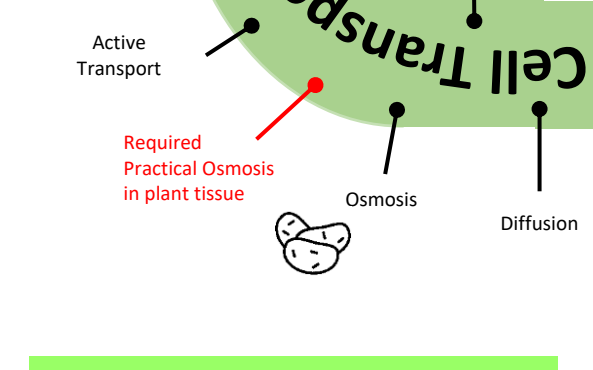


## Plant organs

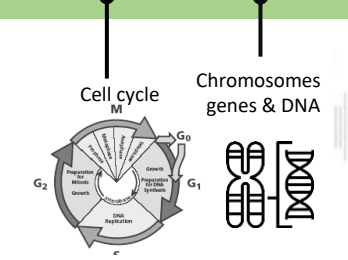


B2 Organisation

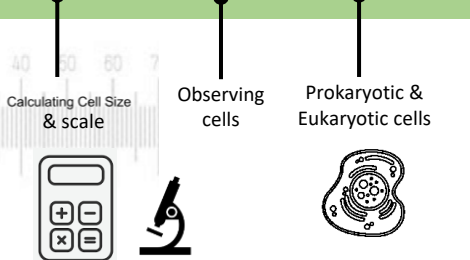
## Cell Transport



## Cell division



## Observing Cells



B1 cell Biology

Year 10

**Combined Science Specification**  
<https://www.aqa.org.uk/subjects/science/gcse/chemistry-8462>

- Biology Topics**
- B1 Cell Biology
  - B2 Organisation
  - B3 Infection & response
  - B4 Bioenergetics
  - B5 Homeostasis & response
  - B6 Inheritance, variation & evolution
  - B7 Ecology
  - B8 Key themes and ideas

- Assessments**
- Biology paper B1**  
 What's assessed?  
 B1 Cell Biology  
 B2 Organisation  
 B3 Infection & response  
 B4 Bioenergetics  
 B8 Key themes and ideas
- Biology paper B2**  
 What's assessed?  
 B5 Homeostasis & response  
 B6 Inheritance, variation & evolution  
 B7 Ecology  
 B8 Key themes and ideas

- How is it assessed?**  
 6 x Written exams, 1 hour 15 minutes each (2x Biology, 2x Chemistry, 2x Physics) 2 GCSEs total  
 Choice of higher or foundation tiers  
 70 marks per paper  
 Multiple choice, structured, closed short answer and open response extended answer questions